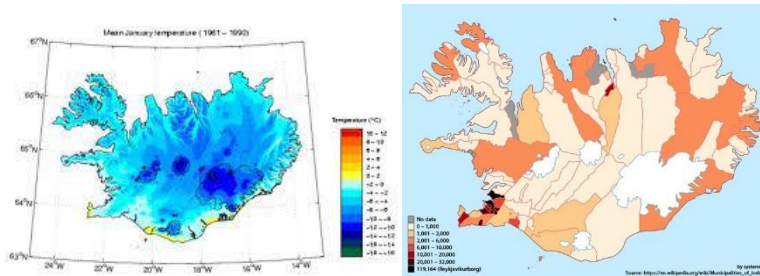


Investigating places with Geography: Iceland

To be able to locate Iceland on a map.



To be able to use maps of Iceland to describe its geography.



To be able to suggest three appropriate questions to investigate the geography of Iceland.

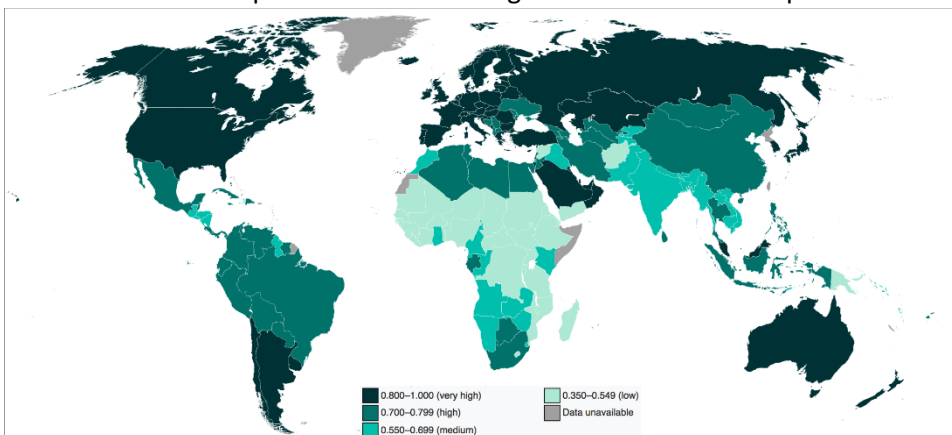
How does Iceland's geography influence its environment? Where do the people of Iceland live and why? How developed is Iceland? How globalised is Iceland? Why do we get tectonic activity in Iceland?

To be able to explain two ways that Iceland was formed?

Two plates are pulled apart by convection currents. Magma rises up to plug the gap between the plates forming volcanoes. As this magma cools it forms new land in this case forming the island of Iceland.

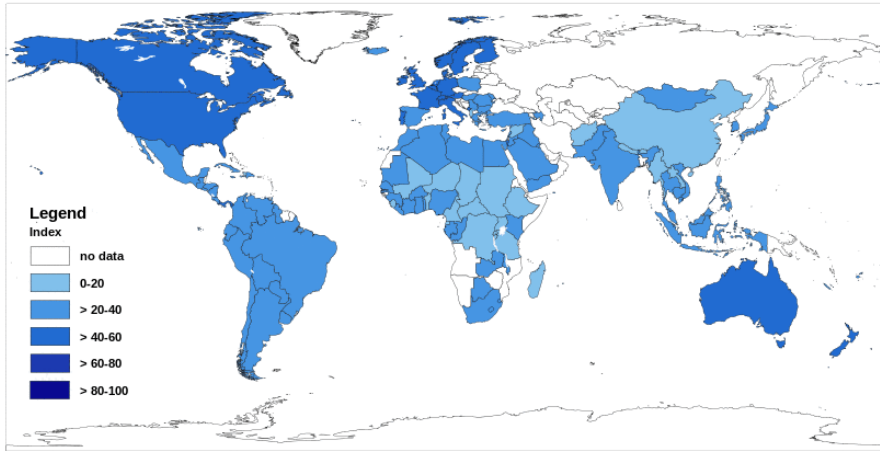
Within the mantle, there will be some radioactive material which will be decaying, as the material decays a radioactive reaction occurs which leads to a localised temperature increase and a vertical plume of material towards the surface. As the material reaches the surface of the crust it melts through eventually reaching the outside, here it solidifies and forms volcanoes.

To be able to use maps and data to investigate the level of development of Iceland.



To be able to use maps and data to look at how globalisation has impacted Iceland.

KOF Index of Globalization 1970



To be able to sequence an investigation into a Geographical topic based in Iceland



To be able to use Geographical understanding of Iceland to evaluate if you would like to live there